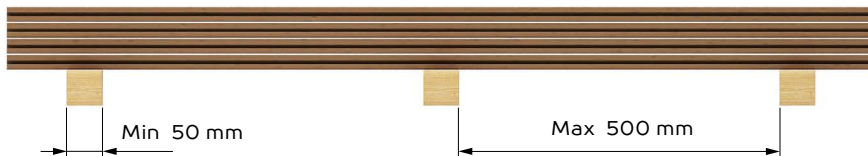


# INSTALLATION OF THE FACADE

## STORAGE

Avoid dragging and throwing the boards while loading and storing. Fence boards should be stored horizontally on the flat surface, preferably in an original package, on a wooden surface or on 50mm wide wood poles, which spacing should not exceed 500 mm. To be stored in a well-ventilated room.



## MATERIALS AND WORK EQUIPMENT

### Necessary materials:

- Fence boards
- Screws
- Material for construction
- End caps or top rail for fences

### Work equipment:

- Cordless drill (drill and torx nozzle)
- Saw
- Measuring tape and pencil
- Protective equipment (goggles, gloves etc.)

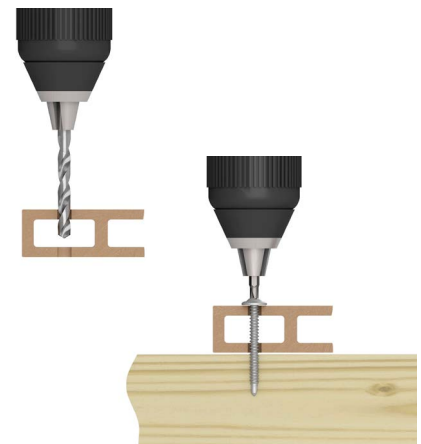
## CUTTING

To cut the wood plastic composite material regular wood cutting devices are suitable, large tooth saw blades should be avoided.

## DRILLING

To fix with screws it is always necessary to previously drill the screw holes into the wood plastic composite material. The drill should be smaller than the diameter of the screw. For instance, for a 4 mm dia-

meter screw, the drill should be with 3 mm diameter. During the sawing process the drill should occasionally be drawn out of the drilling hole, so the sawdust would get out of the hole.



## BASE CONSTRUCTION

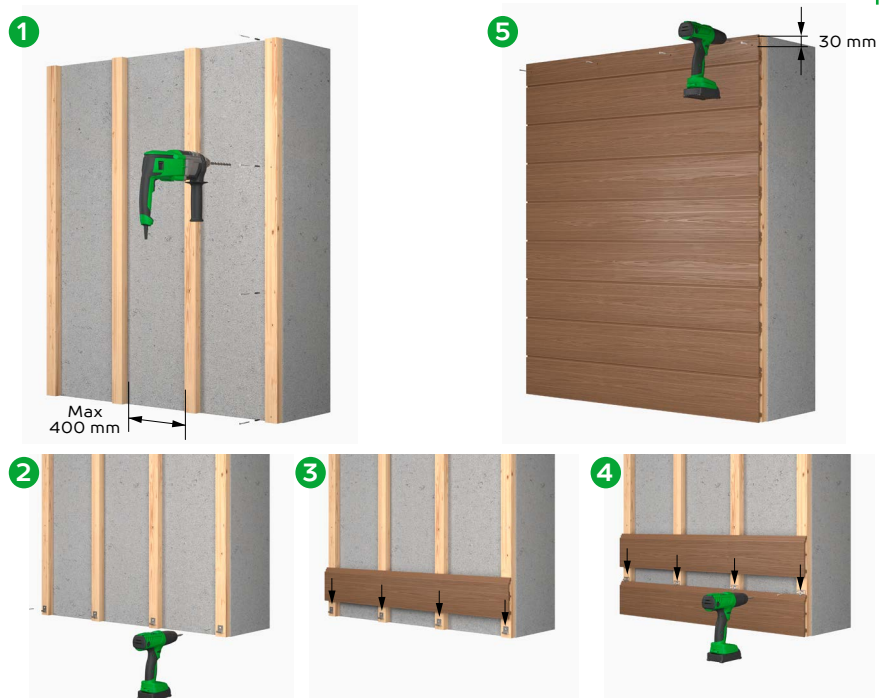
Regular wooden beams are suitable for the base construction of the facade. The beams should be installed with an interval of up to 400 mm. In the places where one facade board ends and another one begins, two beams must be installed side-

by-side. Outermost beams should be installed so that the facade board does not extend more than 30 mm over the edge of the beam. At least three supporting beams must be used for installation of short terrace boards (from 40 mm).

## INSTALLATION STEP BY STEP

1. The beams should be installed to the base construction with an interval of up to 400 mm.
2. Starting clips should be fixed to the beams.
3. First facade board should be fixed with a starter clip.
4. The next ones should be fixed with a fixing clip.
5. The last board should be fixed with a screw through the facade board. The screwing holes should be to previously drilled into the facade boards. By fixing the screw through the board, leave a 30 mm space between the board edge and securing space.

NB! 5 mm space must remain in the contact space with house wall or some other objects.



## FINISHING EXTERNAL CORNERS

Corner board Nordic 150x20 mm is suitable for finishing external corners. Expansion gap shall be left between facade board and edge board Nordic, but if it is intended to cover the expansion gaps, corner board Basic 78x14 mm is suitable for that purpose. Fixing screws of corner boards shall be installed after every 400 mm and distance from the edge shall be at least 30 mm.



## FINISHING INTERNAL CORNERS

Internal corner can be finished also without additional boards, but if it is intended to cover the expansion gaps, corner board Basic 78x14 mm is suitable for that purpose. Fixing screws of corner boards shall be installed after every 400 mm and distance from the edge shall be at least 30 mm.



## CONTINUING FACADE BOARDS

At the points where one facade board ends and a new board begins, two base beams shall be installed side by side. Expansion gap shall be left between facade boards. If it is intended to cover the expansion gaps, corner board Basic 78x13 mm is suitable for that purpose. Fixing screws of corner boards shall be installed after every 400 mm and distance from the edge shall be at least 30 mm.



## EXPANSION GAPS

Depending on the outdoor temperature, expansion gaps should be left at the joints.



EXPANSION GAPS (mm)				
Installation temperature	Board length			
	1.0 m	2.0 m	3.0 m	4.2 m
10 °C	2.0	4.0	6.0	8.4
20 °C	1.5	3.0	4.5	6.3
25 °C	1.0	2.0	3.0	4.2
30 °C	0.5	1.0	1.5	2.1